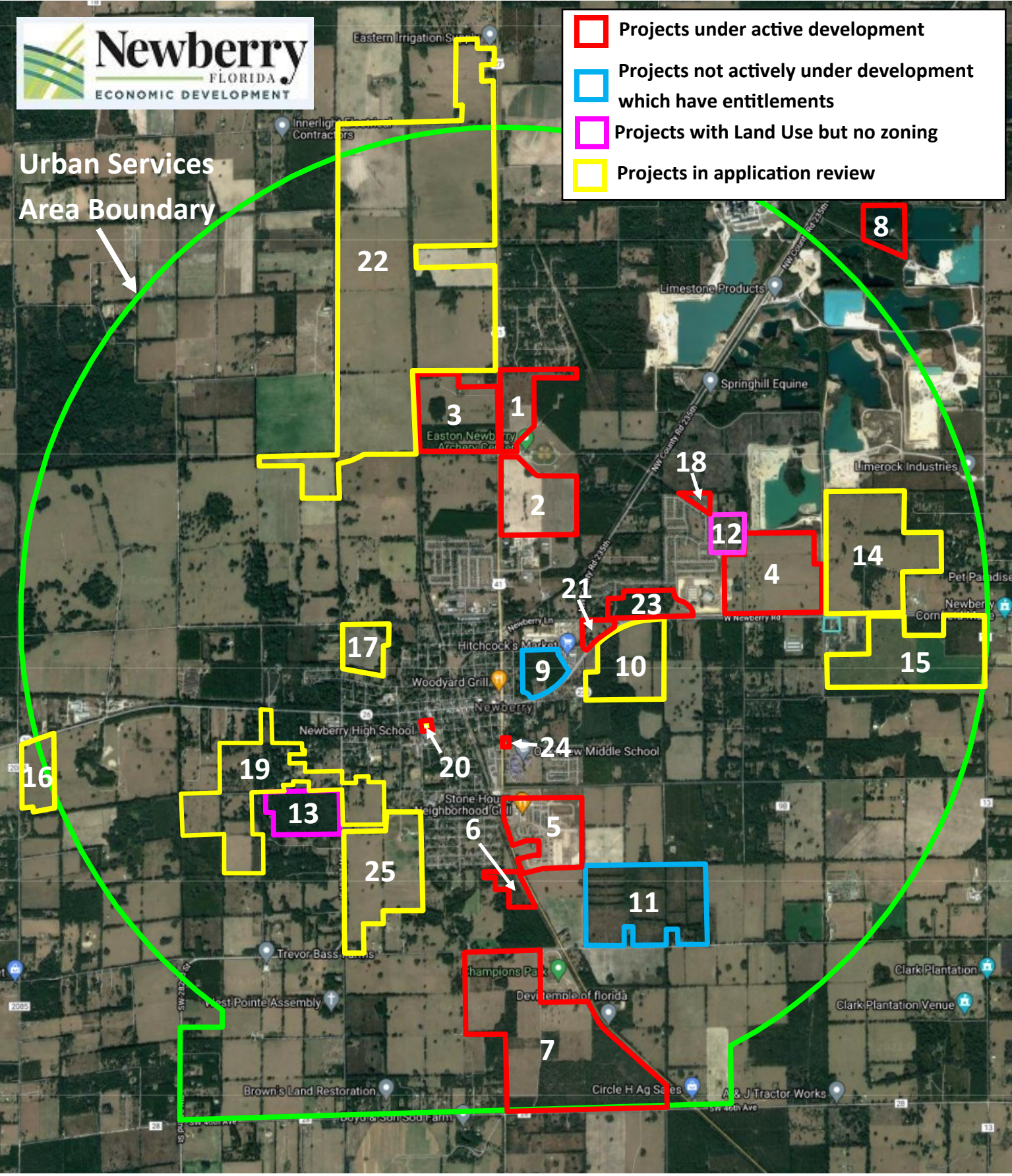


Newberry Projects 2023

Under Development, Entitled, Under Review



Project Index with Initial Approval Date:

1. Avalon Woods Phases 1 & 2, **260** single family units. *CC 03-14-2005 (LDR 04-8).*
2. Avalon Woods MU **440** residential units, **210,000** sq. ft. Commercial. *CC 03-14-2005 (LDR 04-8).*
3. Treehouse Village RV Resort, **850** RV sites/cottages. *BOA 01-11-2021 (SE 20-02).*
4. Newberry Agri-Tech Park, **170**-acres, research laboratories, office, light industrial. *CC 11-26-2018 (CPA 18-02).*
5. Country Way Town Center Planned Development, **365** single family units, **50** apartments, **180,000** sq. ft. Commercial. *CC 09-13-2010 (CPA 10-2 and LDR 10-8).*
6. Country Way South, **94** single family units. *CC 10-12-2009 (LDR 09-2).*
7. Sandia Town Park Planned Development **1,450** residential units (single and multifamily), 400 Hotel Rooms, **1,000** seat baseball stadium, **150,000** sq. ft. sports arena, **300,000** sq. ft. nonresidential, **550,000** sq. ft. light industrial. *Phase 1: CC 08-22-2011 (LDR 11-2), Phase 2: CC 07-13-2020 (LDR 20-01).*
8. Zipline Park, approximately **60-acres**, multiple towers and ziplines. *BOA 5-29-2022 (SE 22-04).*
9. Heritage Oaks Planned Development, **40-acres** remaining, up to **387** residential units, **200,000** sq. ft. commercial. *CC 10-14-2013 (LDR 13-01).*
10. Newberry Plaza, 20-acres commercial, **300** single family rental units, 128-acres total, *Application pending.*
11. Newberry Ridge Mixed Use Development, **999** residential units, **390,000** sq. ft. non-residential. *CC 03-14-2011 (LDR 08-5).*
12. WEEC, **30**-acres, up to **120** residential units, has Low Density Residential Land Use, Agricultural Zoning.
13. CR337 Investments, **67**-acres, **215** single family units (has Low Density Residential Land Use, Agricultural Zoning). *Application In Process.*
14. Sapp Mixed-Use Development, **1,040** residential units, **240,000** sq. ft. commercial. *Application In Process.*
15. Tanglewood Mixed Use Development, **636** single family units, 220-acres, **140,000** sq. ft. commercial. *Application In Process.*
16. Post Industrial Park Project, **50**-acres, variable sized lots. *Preliminary conceptual stage.*
17. Post Planned Residential Development, up to **160** single family residential units, **48.2**-acres +/-, *Application in Process.*
18. Eden's Garden Planned Residential Development, **6.95**-acres, **23** single family units. *Application approved.*
19. Westone Planned Residential Development, **258.3**-acres, **850** residential units. *Application In Process.*
20. Morlynn Planned Development, **1.68**-acres, **14** single family townhouse units. *CC 07-11-2022 (LDR 22-08).*
21. Newberry Grocery Plaza, **12.7**-acres, **56,000** s.f. grocery store, three store rental bays
22. The Ranch at Country Way, **1,100**-acres, **4,500** residential units, **1+ million** s.f. non-residential. *Application under review.*
23. The Curve at Newberry, **45.42**-acres Commercial, **300** multi-family units. *Preliminary conceptual stage.*
24. AMJ Drive thru restaurant/retail bays, **4,500** s.f. total. *Site Plan approved, construction plans under review*
25. Newberry Environmental Park, **200**-acres, Expanded Wastewater plant, Fire Training Tower, HH Hazardous Waste Collection Center, High-tech Composting, Small-scale Large Animal Processing Center.